



# HAWAI'I GRADUATION INITIATIVE

AATN Advisors Conference  
Honolulu Community College ■ October 18, 2013

**Linda K. Johnsrud**  
Executive Vice President for Academic Affairs/Provost

# PUBLIC HIGHER EDUCATION AGENDA

1. Increase the educational capital of the state

## **HAWAI'I GRADUATION INITIATIVE**

2. Address underserved populations/regions

3. Expand workforce development

## **HAWAI'I INNOVATION INITIATIVE**

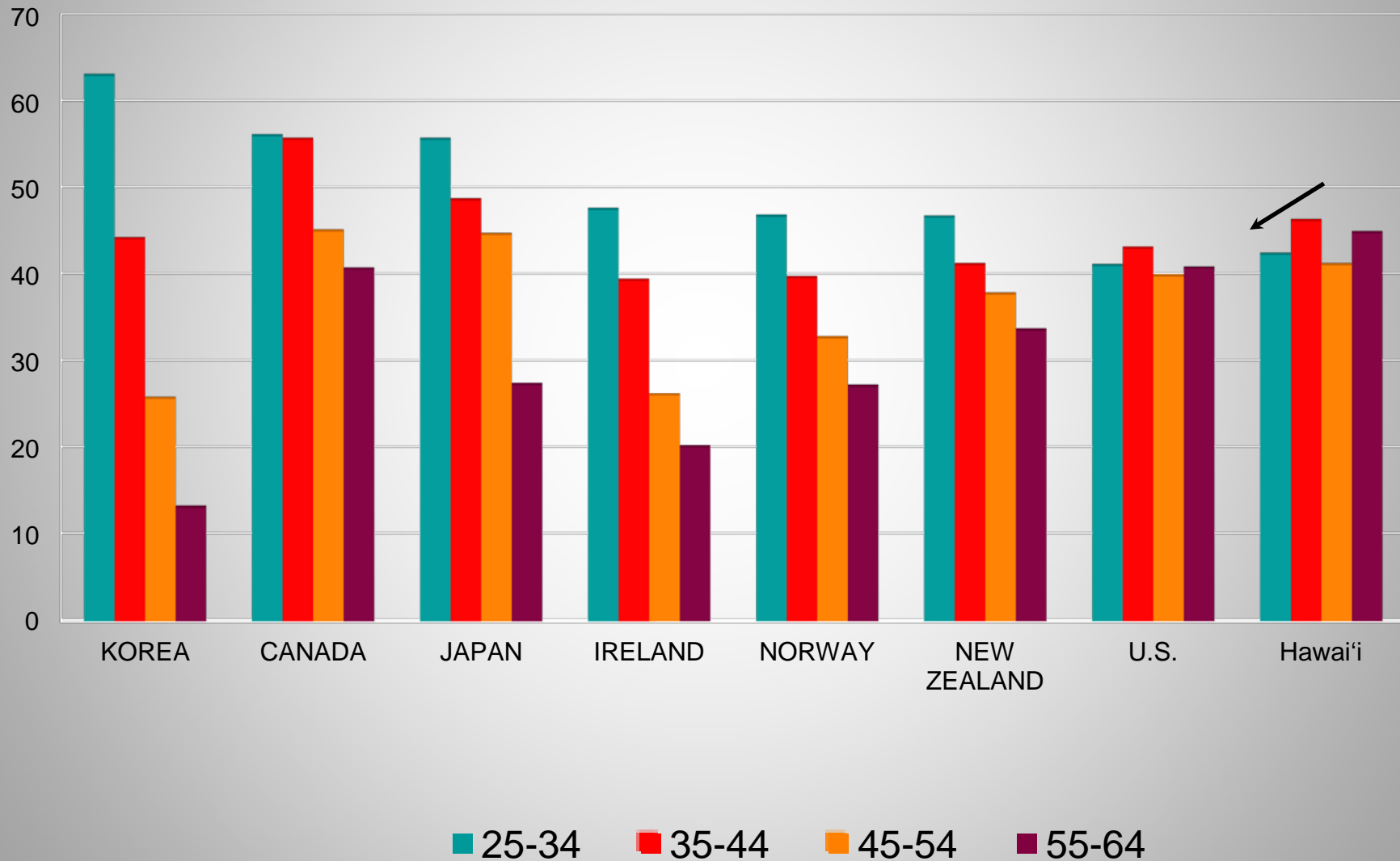
4. Diversify the economy

5. Renew and expand infrastructure

## **RENOVATE TO INNOVATE**

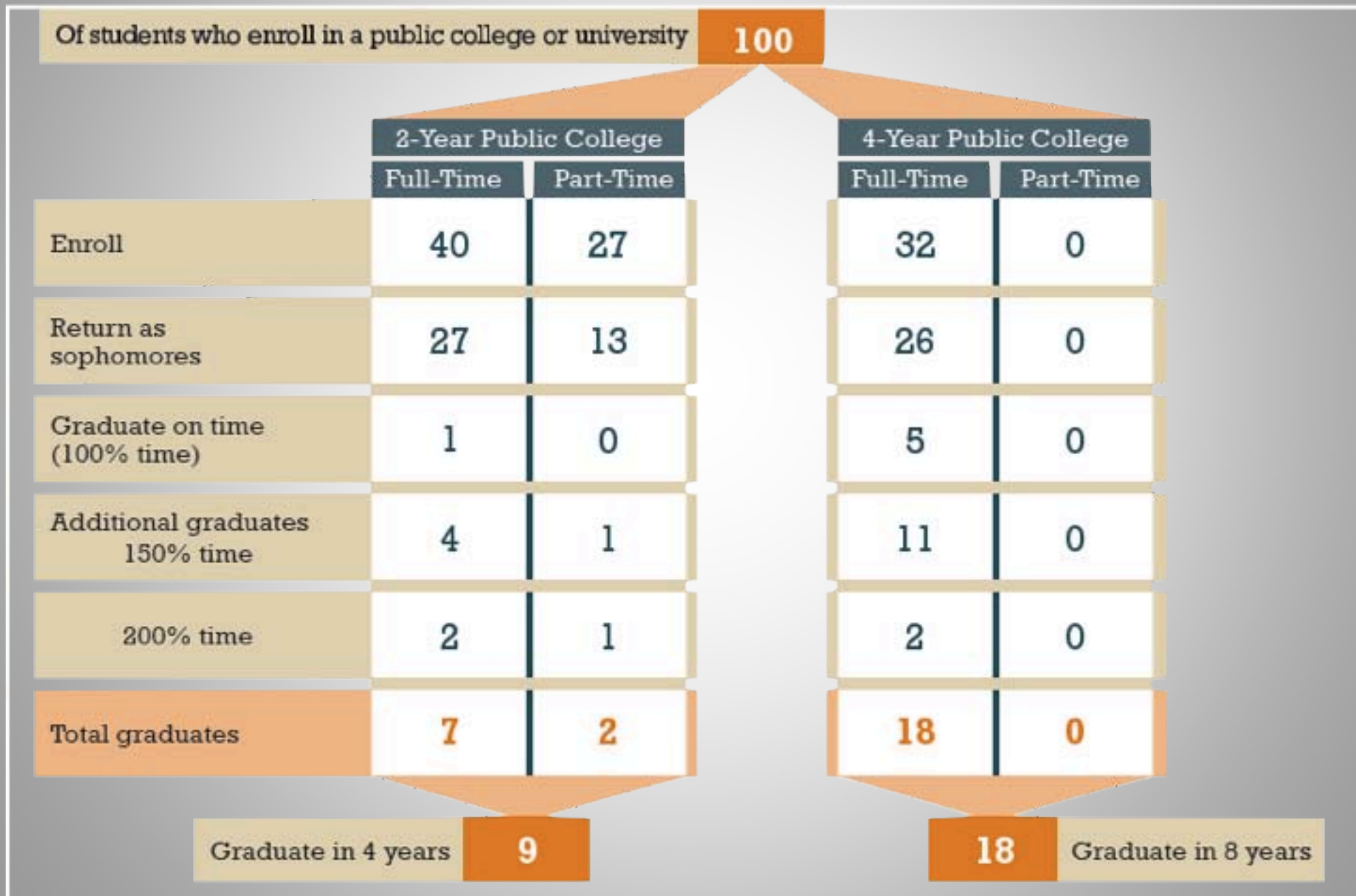
# DIFFERENCE IN COLLEGE ATTAINMENT BY AGE GROUP

U.S. , HAWAI'I AND LEADING OECD COUNTRIES, 2009



# COMPLETE COLLEGE AMERICA

## EDUCATION PIPELINE – Hawai‘i, 2011





# HGI CAMPUS COMPLETION

Fall 2008 First Time Cohort	On-Time (4-Year) Graduation Rate	
	First Time, Full-Time	Transfer*
UHM	19.8%	53.8%
UHH	12.6%	35.1%
UHWO	3.1%	49.5%

\*Transfer rates are four years after transfer.

Fall 2008 cohorts, Bachelor's degree earned at the campus by 2011-2012

Source: HGI Campus Scorecards



# HGI CAMPUS COMPLETION

## UHCC Associate Degree Seeking

Fall 2008 First Time Cohort	Graduation Rate*		
	2-Year	3-Year	4-Year
Full-Time	3.4%	14.3%	22.3%
Part-Time	0.2%	2.7%	6.9%

\*Associate degree earned at any UHCC campus

Full-time and part-time status based on home campus credits attempted in entry term



# HGI CAMPUS COMPLETION

## Freshman to Sophomore Retention Rate

Campus	Fall 2009 to Fall 2010	Fall 2010 to Fall 2011	Fall 2011 to Fall 2012
UHM	76.3%	78%	78.7%
UHH	70.7%	69.1%	69.7%
UHWO	51.9%	60.6%	66.9%
UHCC	54%	53.4%	54.4%

First-time degree-seeking undergraduates that enrolled at the same campus the following fall semester.



**HAWAI'I P-20**  
Partnerships for Education  
*Spark. Transform. Excel.*

**GOAL**



Hawai'i's goal to have 55% earn  
a college degree by year 2025

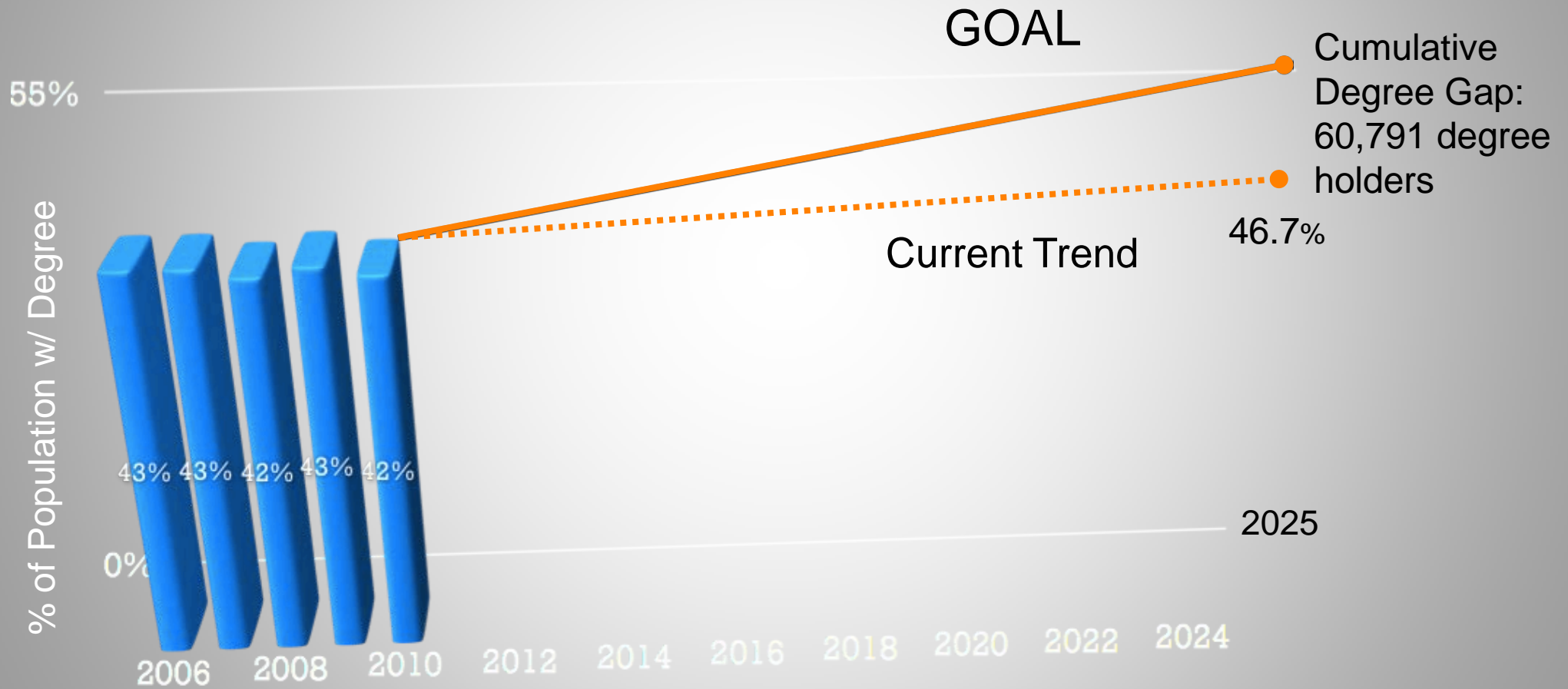
**“55% of Hawai'i's working age  
adults to have a 2- or 4-year  
college degree by the year 2025.”**



# HAWAI'I'S DEGREE GAP



Hawai'i's goal to have 55% earn a college degree by year 2025

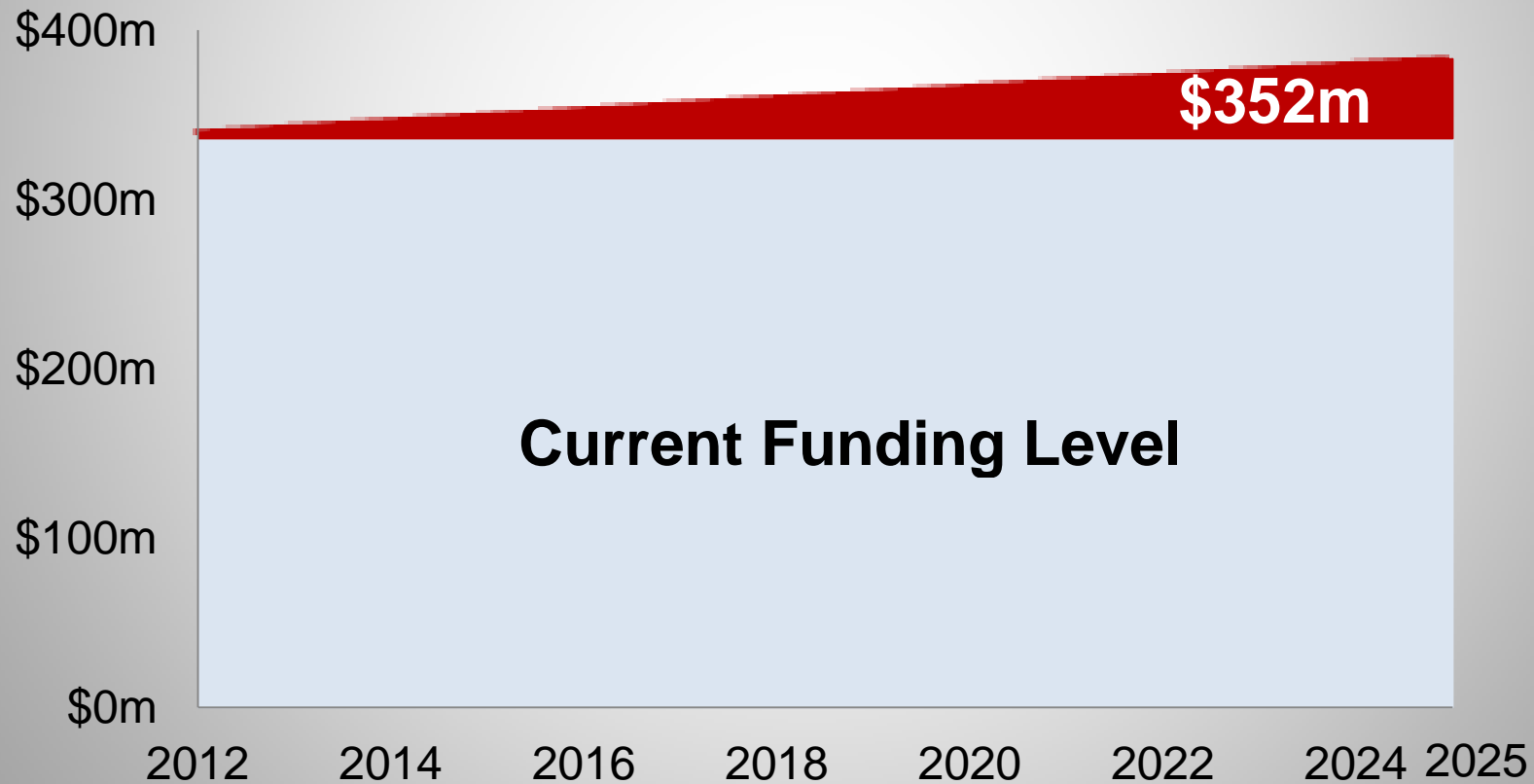


Source: NCHEMS & U.S. Census Bureau, American Community Survey, 1-year estimates, 2006 to 2010

What are the cost implications for educating that many more students through 2025?

# Given our cost per completion:

State funding would have to increase by \$352 million from now until 2025.



Alternatively, given our cost of completion, tuition revenues would have to increase by:

- **23% at Mānoa**
- **30% at Hilo and West O‘ahu**
- **50% at the community colleges**

There is, however,

- a limit to the amount the State can appropriate

and

- a limit to what students and their families can pay

Given the current fiscal realities,  
what can the University do to  
educate more citizens?

**Improve student success.**

# Collectively, we know how to do this

- Work smarter
- Work in collaboration with each other
- Align our capacity with our priorities

Only then will we reach the goal of more educated citizens for Hawai'i.





**15<sup>to</sup> FINISH<sup>TM</sup>**

Part of the Hawai'i Graduation Initiative



[15toFinish.com](http://15toFinish.com)

# PERCENT ENROLLED IN 15 OR MORE CREDITS

All Students	Fall 2011	Fall 2012	Fall 2013
UH System	20.7%	23.4%	25.2%
UH Mānoa	39.2%	44.4%	45.8%
UH Hilo	36.6%	39.3%	40.6%
UH West O‘ahu	19.7%	25.1%	29.2%
Hawai‘i CC	9.2%	12%	13.3%
Honolulu CC	10.3%	11.7%	12%
Kapi‘olani CC	10.2%	9.5%	11%
Kaua‘i CC	9.3%	9.5%	12.9%
Leeward CC	7.5%	9.7%	11%
Maui College	7.6%	7.5%	8.5%
Windward CC	5.3%	7.9%	11.1%



Part of the Hawai‘i Graduation Initiative

Source: UH IRAO Base, Census

# FIRST-TIME FRESHMEN

	UH System		
	Fall 2011	Fall 2012	Fall 2013
15+ credits	1,360	2,102	2,279
<b>% 15+ credits</b>	<b>15.4%</b>	<b>24.1%</b>	<b>27.5%</b>
12-14 credits	4,823	4,200	3,981
% 12-14 credits	54.7%	48.3%	48.1%
<12 credits	2,635	2,402	2,017
% <12 credits	29.9%	27.6%	24.4%



# RETENTION OF FRESHMEN (FALL 2012 TO FALL 2013)

	12-14 Credits	15 or more Credits
UH System	62.2%	75.9%
UH Mānoa	73.3%	82.2%
UH Hilo	65.4%	73.8%
UH West O‘ahu	60.1%	64%
UH Community College	58.9%	68.3%



Source: UH IRAO Base, Census

**Advisors are key.**

# What can you do?

Support the Board of Regents  
Hawai'i Graduation Initiative  
Resolution

Passed: September 19, 2013

# Support the BOR by:

## Promoting College Preparation

- Support alternative mechanisms for placement into college-level English and math
- Implement models to accelerate entry into college-level English and math, and decreasing time in developmental courses
- Have students enroll in developmental courses in their first year

# Support the BOR by:

Ensuring efficient transfer of students and credits

- Provide clear curricular pathways
- Promote dual enrollment programs with explicit on-ramps to four-year programs
- Require common course numbering for equivalent courses
- Ensure that similar programs/majors have the same name and program code



# Support the BOR by:

## Enabling on-time graduation

- Publish semester-by-semester academic maps with milestones clearly defined
- Advise students that 15 credits is the full-time load to graduate on-time.
- Support the completion of 30 credits per year with mandatory advising, one year schedule of courses, summer school, etc.
- Complete English and math in their first year

# Thank you!

[hawaii.edu/hawaiiigradinitiative](http://hawaii.edu/hawaiiigradinitiative)

[15tofinish.com](http://15tofinish.com)



Part of the Hawai'i Graduation Initiative